

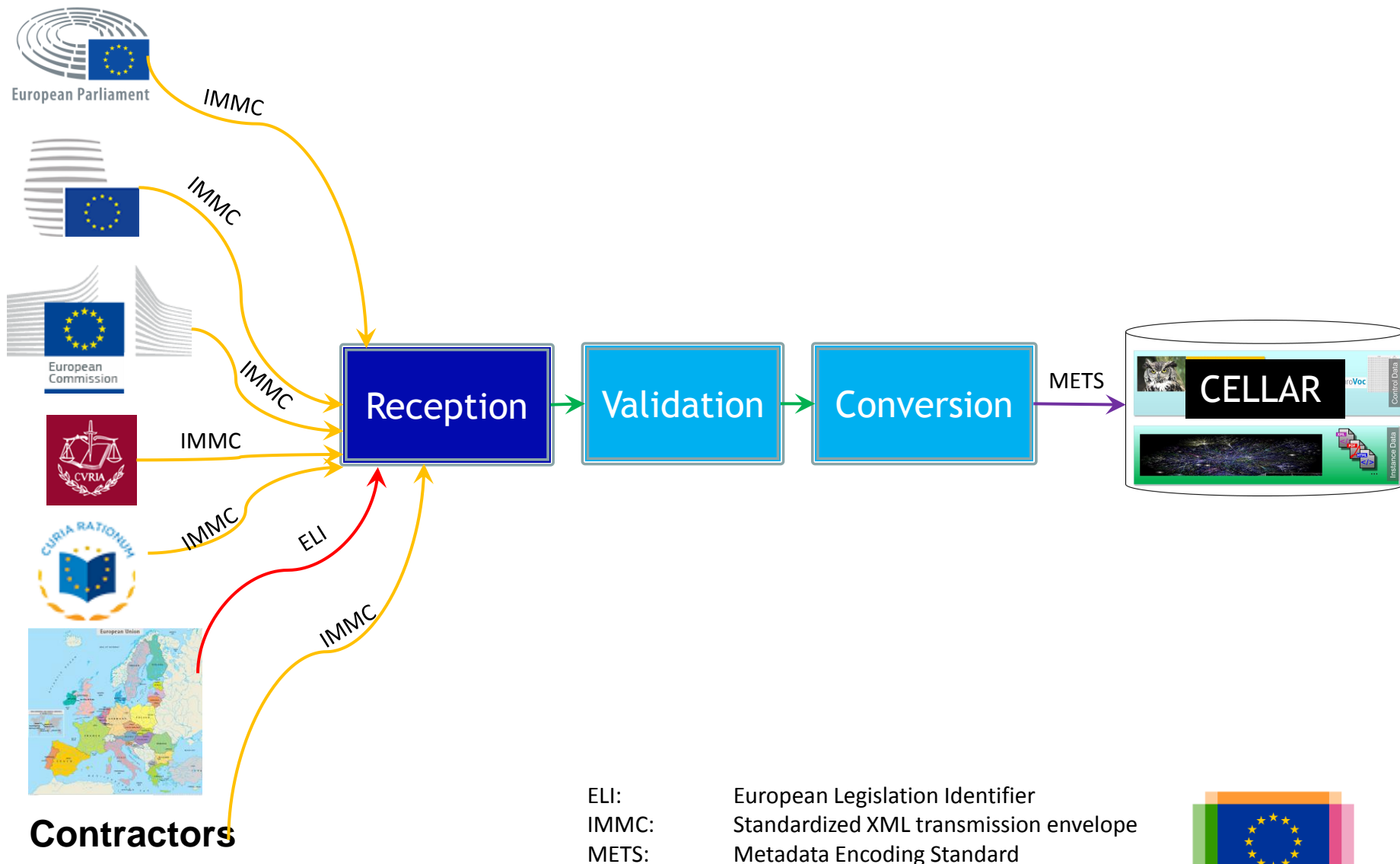


The EU as a provider of linked and open data: CELLAR

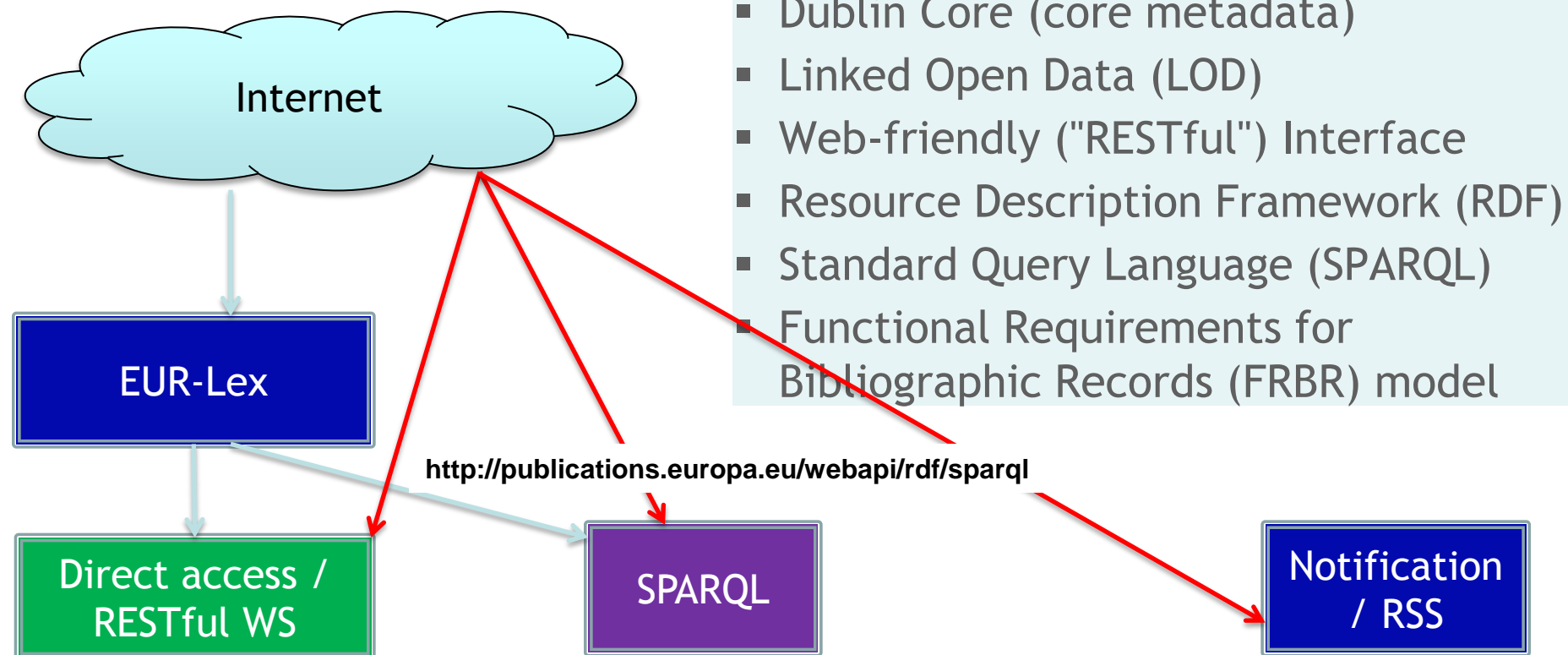
Norbert Hohn, Marc Küster
Publications Office of the EU

European Data Forum
Luxembourg, 16 November 2015

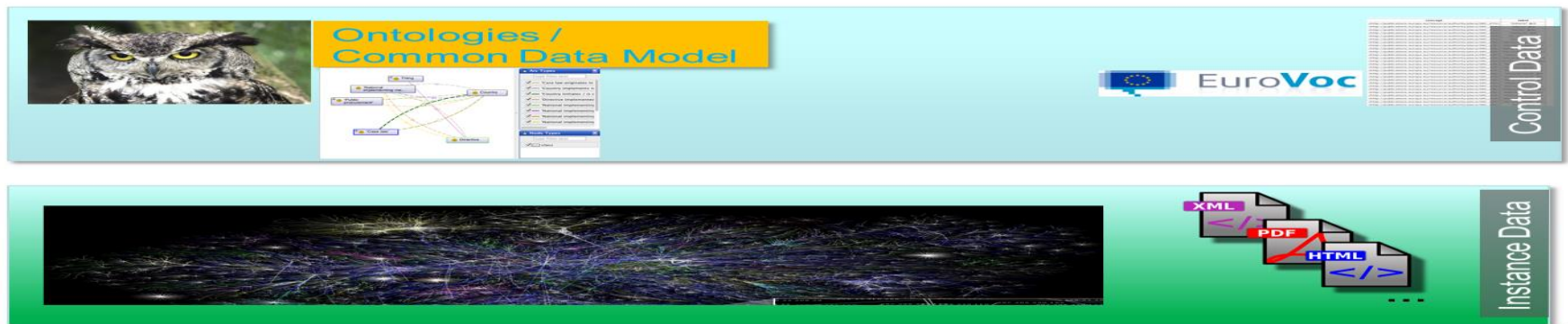
What goes into the CELLAR?



How can you retrieve data from CELLAR?



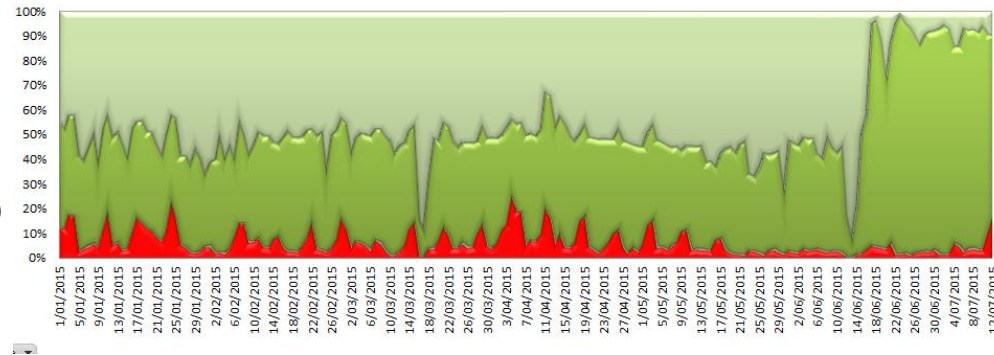
`http://publications.europa.eu/resource/...`



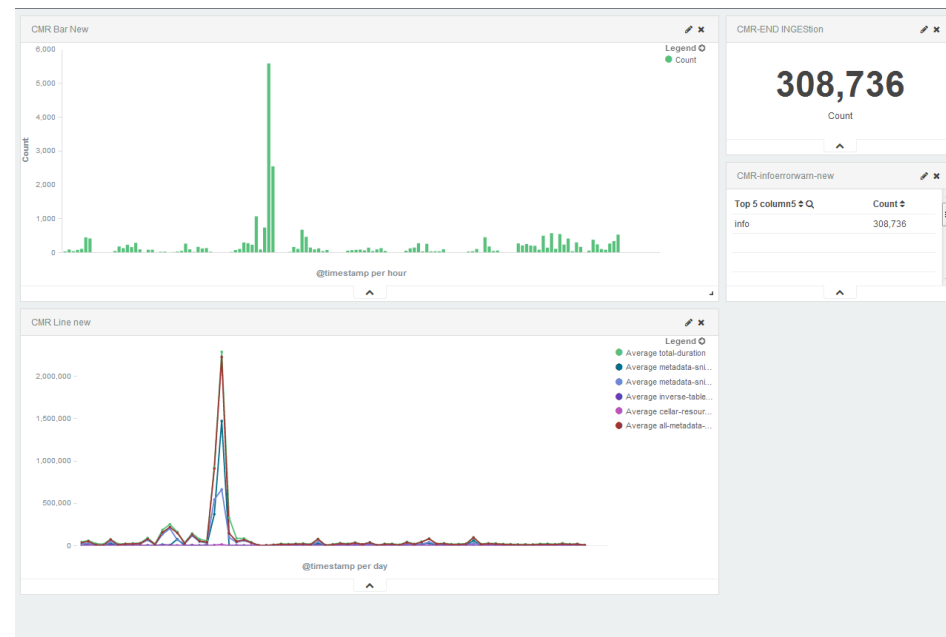
How much is CELLAR used?

- **5 mio requests per day** served on average, peaks **>20 mio**
- **> 1 mio** different resources in **> 9.9** million linguistic versions and **> 28 mio** items
- **> 215 million** persistent identifiers
 - **> 1400** million triples in Oracle RDF store
- Ca. 5000 resources treated each day (most in 23 languages)
- Sizes:
 - **4 TB** Oracle DB (compressed)
 - Content (in Fedora repository) **> 17 TB**
 - **>110** million files in Fedora

State: 2015-11-24



Distribution of requests served 1st half 2015



Treated packages since 1.9.2015



Attributions for reused images:

Wine CELLAR: <https://flic.kr/p/pkG1QS>

Photo of OWL: <https://flic.kr/p/6AMV1C>

<http://gephi.github.io/features/>

Network: https://en.wikipedia.org/wiki/Network_theory#/media/File:Internet_map_1024.jpg

<https://openclipart.org/detail/169750/fileiconpdf>

<https://openclipart.org/detail/169753/fileiconxml>

<https://openclipart.org/detail/169751/fileiconhtml>

